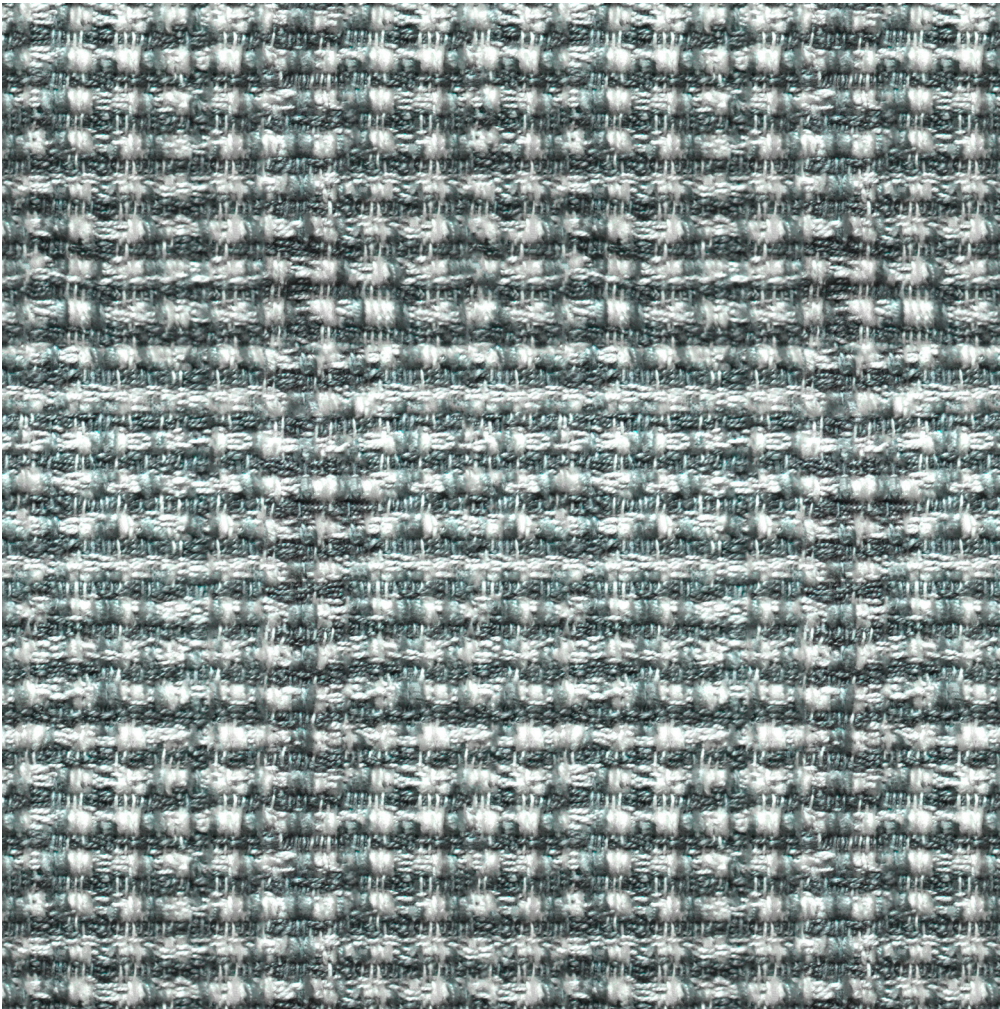


# ATELIER PURCELL

## LOGGIA PISTOIA WI01504



### **Description:**

Loggia draws inspiration from the façades of Tuscany's Cathedrals. Adorned with multi-level loggias, these buildings are articulated by the ever changing light and shadow. This design's two-tone combination gives it a contemporary yet sophisticated appeal.

### **Collection:**

Loggia

### **Composition:**

20% Cotton, 10% Linen,  
20% Poycarbonate, 15% Polyester,  
35% Viscose

### **Width:**

55" (140cm)

### **Vertical Repeat:**

none

### **Horizontal Repeat:**

none

### **Country of Origin:**

Italy

### **Freight Code:**

EU02

### **Characteristics:**

|   |                          |
|---|--------------------------|
| Resistance to PILLING after 2000 cycles | 3/4                      |
| Martindale                              | 25.000                   |
| Light fastness                          | 5                        |
| Flammability                            | PASS<br>NOT PASS<br>PASS |

### **Testing & Certifications**

EN ISO 12945-2

EN ISO 12947-2

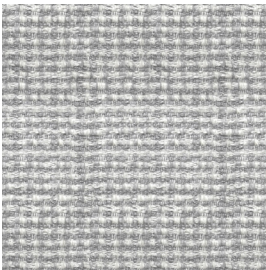
EN ISO105B02

BS5852 Cigarette

BS5852 Match

CAL TB 117

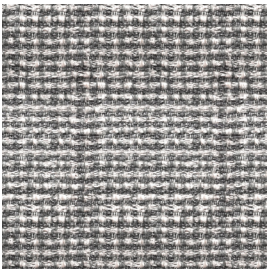
NOTES: DISPLAYED COLOUR AND HUE MAY VARY FROM ACTUAL FABRIC. PLEASE CONTACT YOUR LOCAL SALES ASSOCIATE TO REQUEST A SAMPLE.



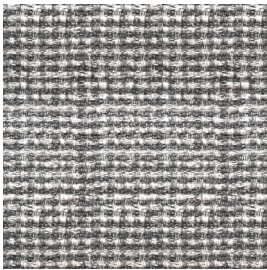
*PISA WLO1201*



*LUCCA WLO1302*



*SIENA WLO1403*



*PISTOIA WLO1504*

---

NOTES: