



Description:

Kittan has a mismatched weave creating a textured non-uniform surface which is juxtaposed with sophisticated selection of colours. From a distance this fabric appears monochrome, but as you approach it a second colour is revealed making it both subtle and intriguing.

Collection:

Kittan

Composition:

20% Cotton, 10% Linen, 25% Polyester, 45% Viscose

Width:

55" (140cm)

Vertical Repeat:

approx 2" (5 cm)

Horizontal Repeat:

approx 1 3/4" (4.4 cm)

Country of Origin:

Italy

Freight Code:

EU01

Characteristics:

Resistance to PILLING after 2000 cycles	3/4
Martindale	25.000
Light fastness	5
Flammability	PASS NOT PASS NOT PASS

Testing & Certifications

EN ISO 12945-2

EN ISO 12947-2

EN ISO105B02

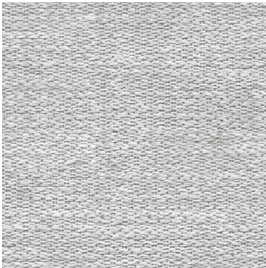
BS5852 Cigarette

BS5852 Match

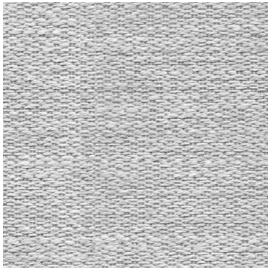
CAL TB 117

ATELIER PURCELL

COLORWAY



RHODES DM00201



SAMOS DM00302



CRETE DM00503

NOTES: