**Description:**

A classic cotton velvet woven with a fine combed cotton yarn; Tocai's updated palette sees an extended range of neutrals sit amongst trend inspired blues and greens and warmer tones of spicy reds.

Collection:

Velluto

Composition:

93% Cotton, 7% Polyester

Width:

55" (140cm)

Vertical Repeat:

none

Horizontal Repeat:

none

Country of Origin:

Italy

Freight Code:

EU01

Characteristics:

| | |
|---|--------------------------|
| Resistance to PILLING after 2000 cycles | 5 |
| Martindale | >100.000 |
| Light fastness | 5 |
| Flammability | PASS NOT PASS PASS |

Testing & Certifications

EN ISO 12945-2

EN ISO 12947-2

EN ISO105B02

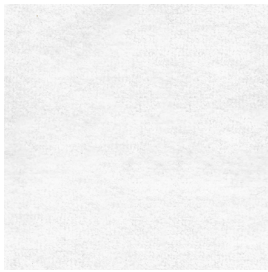
BS5852 Cigarette

BS5852 Match

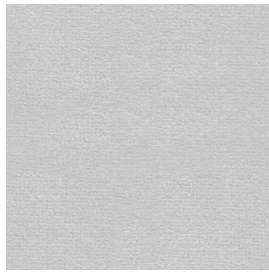
CAL TB 117

ATELIER PURCELL

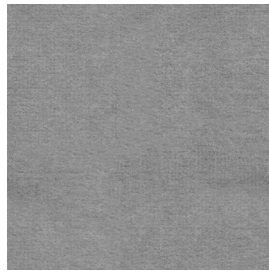
COLORWAY



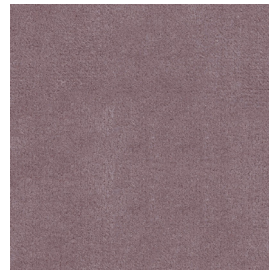
NUVOLA TC00101



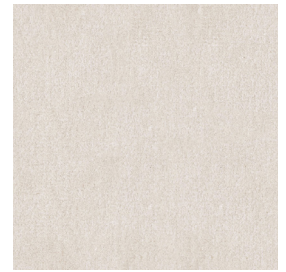
FROST TC16602



MIST TC01603



ROSA ANTICO TC01704



ALMOND TC44405



CHARTREUX TC01106



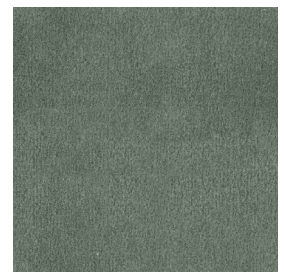
PERSIAN TC01207



SEA BREEZE TC02208



TAUPE TC44509



DARK CLAY TC44310



SIENA TC01511



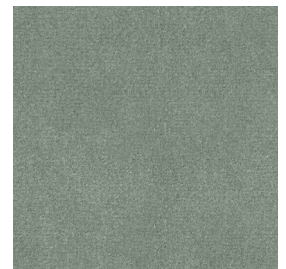
PHOENICIA TC01812



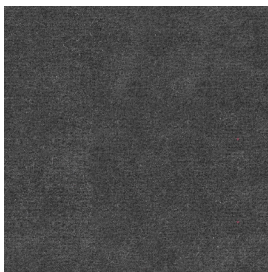
TUSCANY TC01413



VINACCIO TC01914



ANCHOR TC16815



ASPHALT TC01316

NOTES: