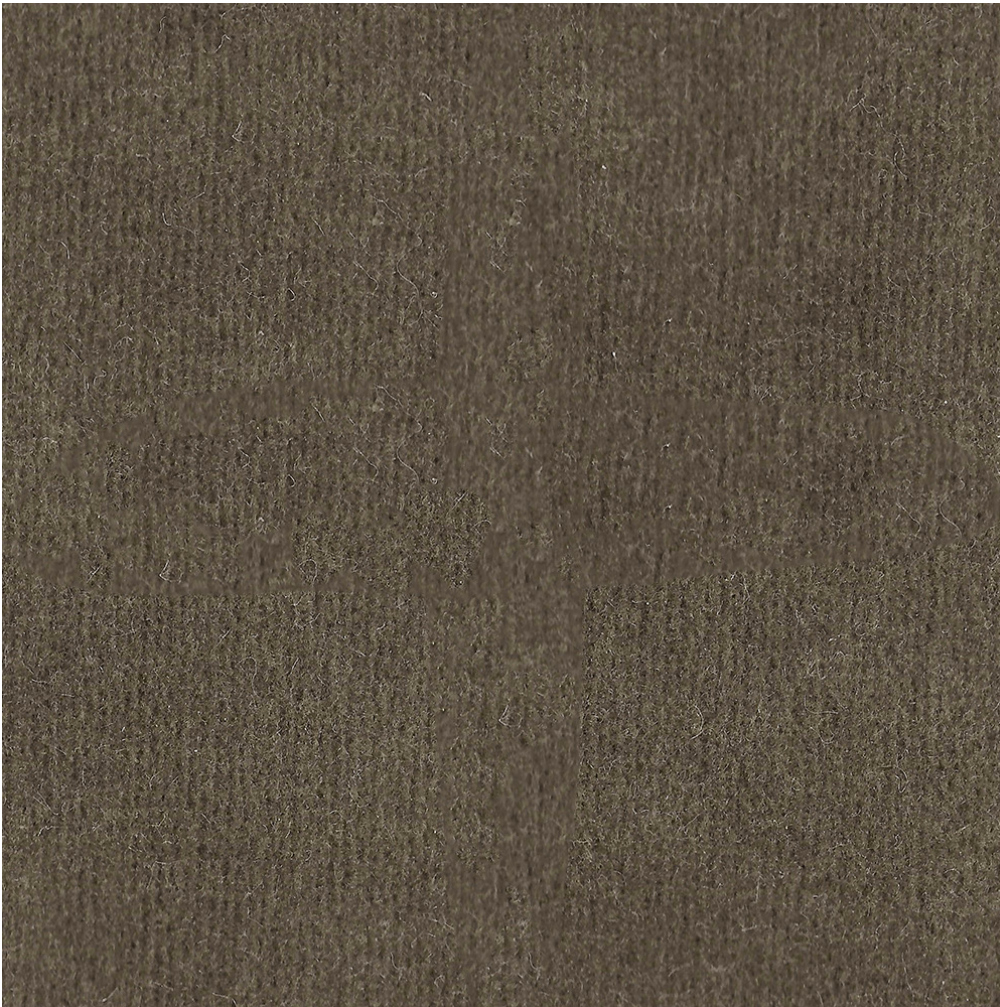


# ATELIER PURCELL

## VELLUTO TAUPE TC44509

**Description:**

A classic cotton velvet woven with a fine combed cotton yarn; Tocai's updated palette sees an extended range of neutrals sit amongst trend inspired blues and greens and warmer tones of spicy reds.

**Collection:**

Velluto

**Composition:**

93% Cotton, 7% Polyester

**Width:**

55" (140cm)

**Vertical Repeat:**

none

**Horizontal Repeat:**

none

**Country of Origin:**

Italy

**Freight Code:**

EU01

**Characteristics:**

|   |                          |
|---|--------------------------|
| Resistance to PILLING after 2000 cycles | 5                        |
| Martindale                              | >100.000                 |
| Light fastness                          | 5                        |
| Flammability                            | PASS<br>NOT PASS<br>PASS |

**Testing & Certifications**

EN ISO 12945-2

EN ISO 12947-2

EN ISO105B02

BS5852 Cigarette

BS5852 Match

CAL TB 117

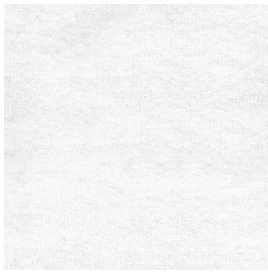
NOTES: DISPLAYED COLOUR AND HUE MAY VARY FROM ACTUAL FABRIC. PLEASE CONTACT YOUR LOCAL SALES ASSOCIATE TO REQUEST A SAMPLE.



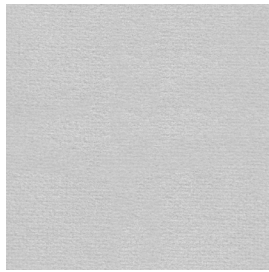
# ATELIER PURCELL

---

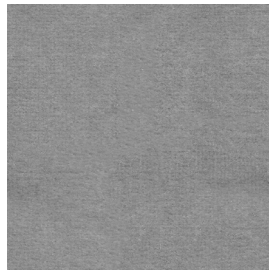
## COLORWAY



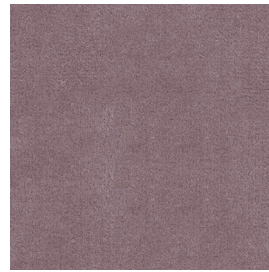
*NUVOLA TC00101*



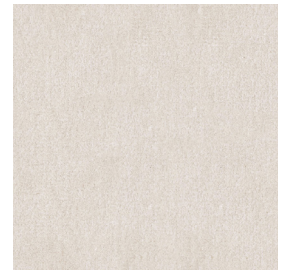
*FROST TC16602*



*MIST TC01603*



*ROSA ANTICO TC01704*



*ALMOND TC44405*



*CHARTREUX TC01106*



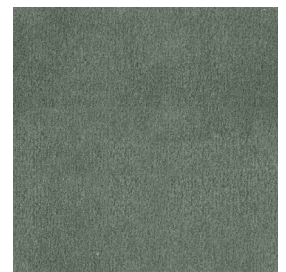
*PERSIAN TC01207*



*SEA BREEZE TC02208*



*TAUPE TC44509*



*DARK CLAY TC44310*



*SIENA TC01511*



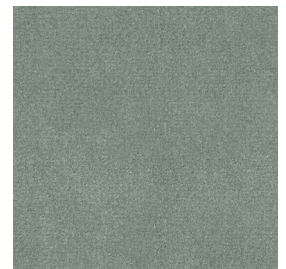
*PHOENICIA TC01812*



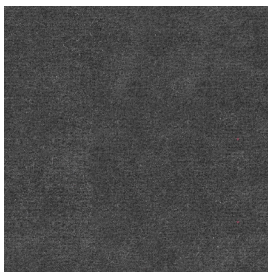
*TUSCANY TC01413*



*VINACCIO TC01914*



*ANCHOR TC16815*



*ASPHALT TC01316*

---

NOTES: